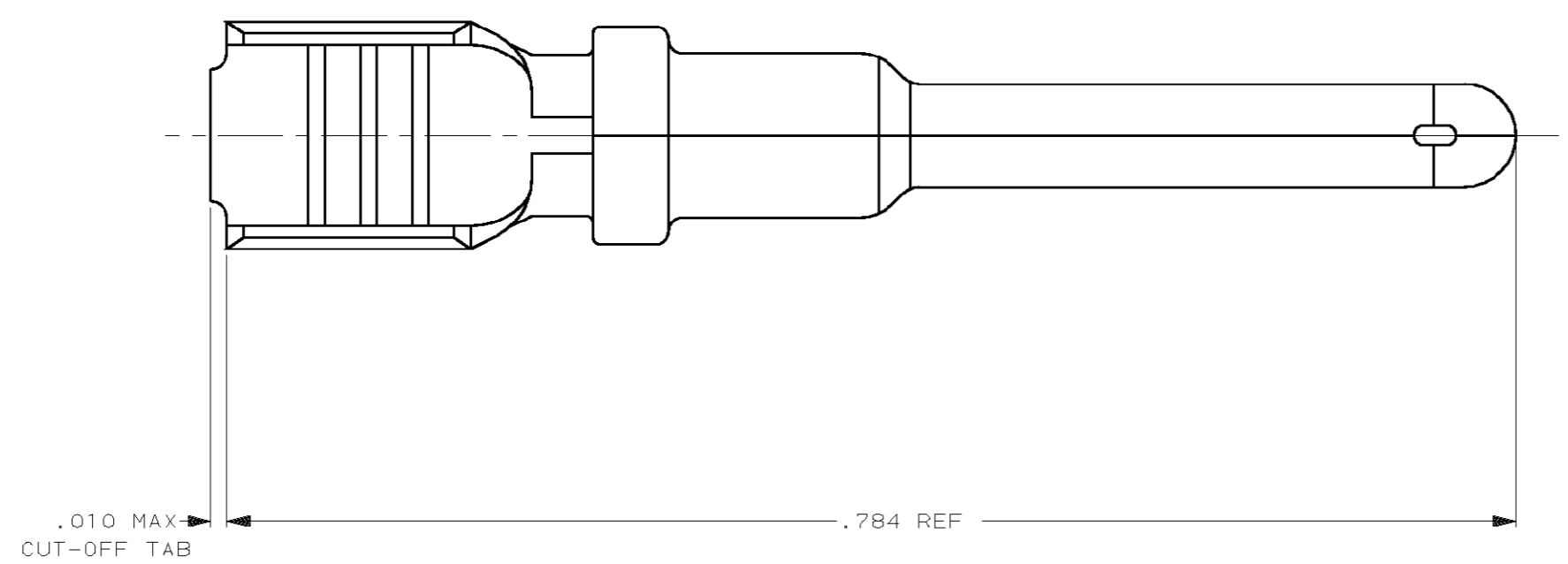
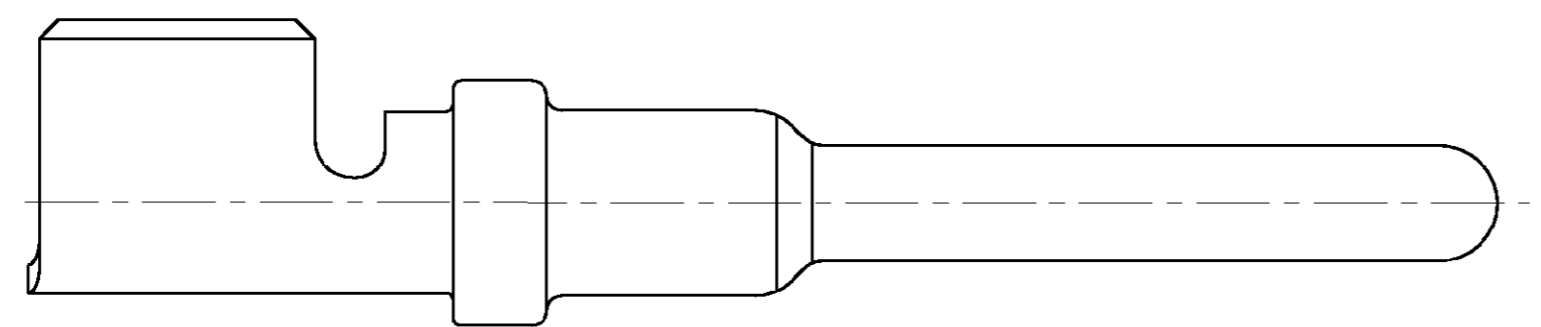


THIS DRAWING IS UNPUBLISHED. RELEASED FOR PUBLICATION, 19 .  
 © COPYRIGHT 19 BY AMP INCORPORATED. ALL INTERNATIONAL RIGHTS RESERVED.

LOC	DIST	P	F	ZONE	LTR	DESCRIPTION	DATE	APPD
GE	33				0	REL PER PR# 99-7	2-16-99	PC WL
					A	REV PER OK40-0013-01	24AUG01	AG MT



1. WIRE RANGE: 18-14 AWG



DESCRIPTION	FINISH	PART NUMBER
LOOSE PIECE VERSION OF 638112-3	NICKEL	776298-2
LOOSE PIECE VERSION OF 638112-1	GOLD	776298-1

DO NOT SCALE PRINT. UNLESS SPECIFIED DIMENSIONS IN INCHES TOLERANCES ON : 2 PLC DEC ± .02 3 PLC DEC ± .005 ANGLES ± -	DR	P. COLLINS	2-17-99	<b>AMP</b> AMP Incorporated Harrisburg, PA 17105-3608  NAME PIN CONTACT, WIRE-TO-WIRE LOOSE PIECE
	CHK	W. LONG	2-17-99	
	APPD	G. MARPOE	2-17-99	
	APPD	-	-	
MATERIAL	0.014 THK COPPER ALLOY		PRODUCT SPEC	-
FINISH	-		APPLICATION SPEC	-
WEIGHT		-	SCALE	10:1
SIZE		C	CAGE CODE	00779
DRAWING NO		C=776298		SHEET
				1 OF 1

THIS DRAWING IS A CONTROLLED DOCUMENT FOR AMP INCORPORATED. IT IS SUBJECT TO CHANGE AND THE CONTROLLING ENGINEERING ORGANIZATION SHOULD BE CONTACTED FOR THE LATEST REVISION.